

Urban Solutions and Services Overview

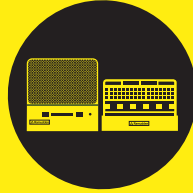


Ramudden Urban Solutions: Redefining Safety with Leading-Edge Products

Ramudden's Urban Solutions prioritize safety and efficiency in dynamic urban environments. Our comprehensive range of products and services are designed to protect both workers and the public while minimizing disruptions. From high-traffic areas to sensitive pedestrian zones, our solutions deliver robust safety measures that adapt to the unique demands of city infrastructure projects.



**Pedestrian/Traffic
Control & Signage**



**Barriers, Fencing &
Site Containment**



**Smart Digital
Technologies**

The Value We Add

Safety: Through our extensive knowledge, many years of expertise and tailored solutions, we help educate and enhance the safety of our customers' projects.

Resource Efficiency: We streamline the project right from the initial planning stage, optimize the use rate, and extend the service life of materials.

Compliance: We ensure compliance with regulations related to worksite safety, the environment, customer needs, and corporate governance.

Sustainability: We contribute to a circular economy, safeguard the health and safety of our employees, third parties, and support the communities in which we operate.

Innovation: Ongoing development of both physical and digital solutions, including the digitalization of roadworks, means that we move both ourselves and the industry forward as a whole.

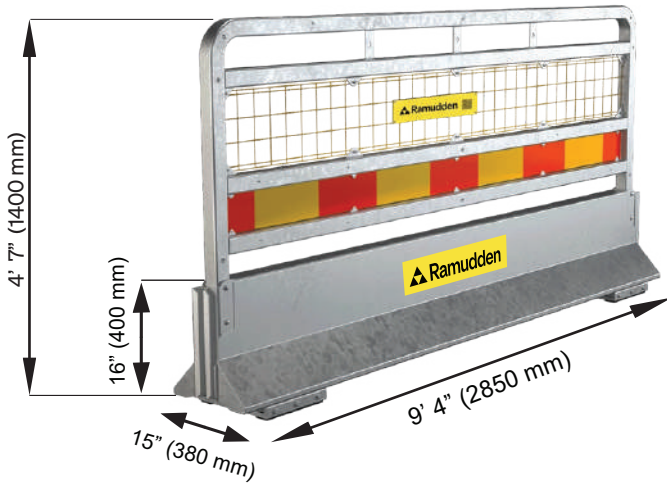
Growth: By continuously improving our deliverables and introducing new products and services, we contribute to the growth within the traffic and infrastructure industry.



Torun®

The New Generation of City Barriers

The Torun® redefines urban safety with its exceptional performance and impressively low weight, making it easy to handle without compromising strength. Expertly crafted, it provides durable protection while seamlessly integrating into city landscapes. The Torun® sets a new benchmark for modern urban safety, combining innovation and functionality to meet the highest standards.



Weight
1257 lbs.



Material
Concrete,
Steel &
Rubber



Angle Accommodation
82 ft
25 m

Torun® Benefits

- **Tested for Safety:** Successfully MASH and EN tested, meeting industry standards for roadwork and construction
- **Superior Protection:** Designed to safeguard work zones and high-traffic areas with shock-absorbing, impact-reducing features
- **Flexible and Modular:** Lightweight, modular design allows for quick setup, easy reconfiguration, and seamless cornering (0 to 90 degrees)
- **Durable in All Conditions:** Built with weather-resistant materials to perform in any environment
- **Customizable for Versatility:** Equipped with a range of adaptable accessories to fit diverse work site needs



Torun City Barrier
Bare



Torun Site Containment
Setup



Torun with Adaptable
Fence Accessory

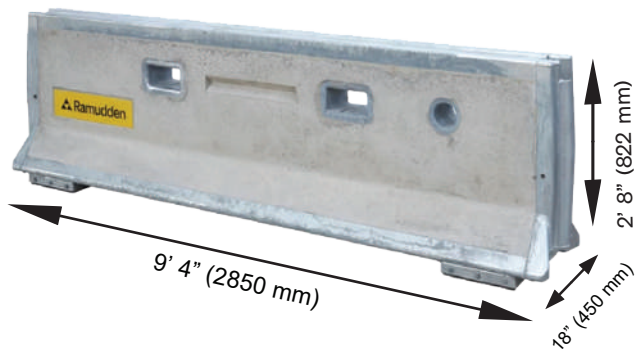


Torun Roadway
Delineation Setup

SVEA®

High-Performance Temporary Barrier System

The SVEA® is an excellent alternative to other heavy-duty barriers. Designed to reduce hazards and absorb collision impact, it serves as a durable physical barrier between vehicles and construction zones, work areas, or median strips, ensuring safety and directing traffic. Its robust construction makes it ideal for high-risk environments, providing reliable protection.



Weight

2822 lbs.



Material

Concrete & Steel



Angle Accommodation

177 ft
54 m

SVEA® Benefits

- **Tested for Safety:** Successfully MASH and EN tested, meeting industry standards for roadwork and construction
- **Exceptional Strength & Safety:** Designed to handle high-impact collisions, offering maximum protection
- **Noise Reduction & Customization:** Optional SoundPanels reduce noise in urban settings, and a range of adaptable accessories ensures suitability for diverse work site conditions
- **Digital Integration:** Barrier can be digitized for real-time monitoring of site events, such as impacts or incursions
- **Quick Installation & Low Maintenance:** Easy setup minimizes downtime and labor costs, while requiring minimal upkeep for long-term savings
- **Comprehensive Site Security:** The system provides a fully contained job site solution, eliminating the risk of liabilities caused by unauthorized access



SVEA Complete Site Containment Setup



SVEA High Wind Load / Airport Operations Area Setup



SVEA with Adaptable Fence Accessory



SVEA + SoundPanel with Custom Banner Wrap

Intellitag[®]

Cloud-Connected Digital Twin for Precise Asset Control

Intellitag[®] is a cloud-connected asset monitoring device that can be attached to a wide range of temporary traffic management assets. Once deployed it will create a digital twin of the asset it is attached to and monitor its position and status. This includes tilt and fall over events, making it ideally suited to monitor temporary traffic management signage.



Intellitag[®] Benefits

- **Enhanced Safety & Proactive Monitoring:** Acts as a digital twin, providing real-time alerts for moved or fallen signs, minimizing undetected issues and ensuring worksite safety
- **Efficient, Cost-Effective Maintenance:** Eliminates routine checks with data-driven monitoring, reducing operational expenses from manual inspections and damage
- **Time-Saving & Increased Efficiency:** Streamlines maintenance, reducing work hours and allowing operators to manage assets from a single interface, improving workflow
- **Versatile Monitoring & Seamless Integration:** Tracks various equipment, such as temporary signage and barriers, with easy conversion into digital assets for remote monitoring
- **Eco-Friendly Operations:** Reduces vehicle emissions by cutting down site visits for physical inspections



